

Customer :

customer

Customer part :

customer part

Comment :

Comment

S1=3.71

S2=3.57

Tmax=459

Tp S2=498.0

PI=0.51

HI=82

Sample =1731.80

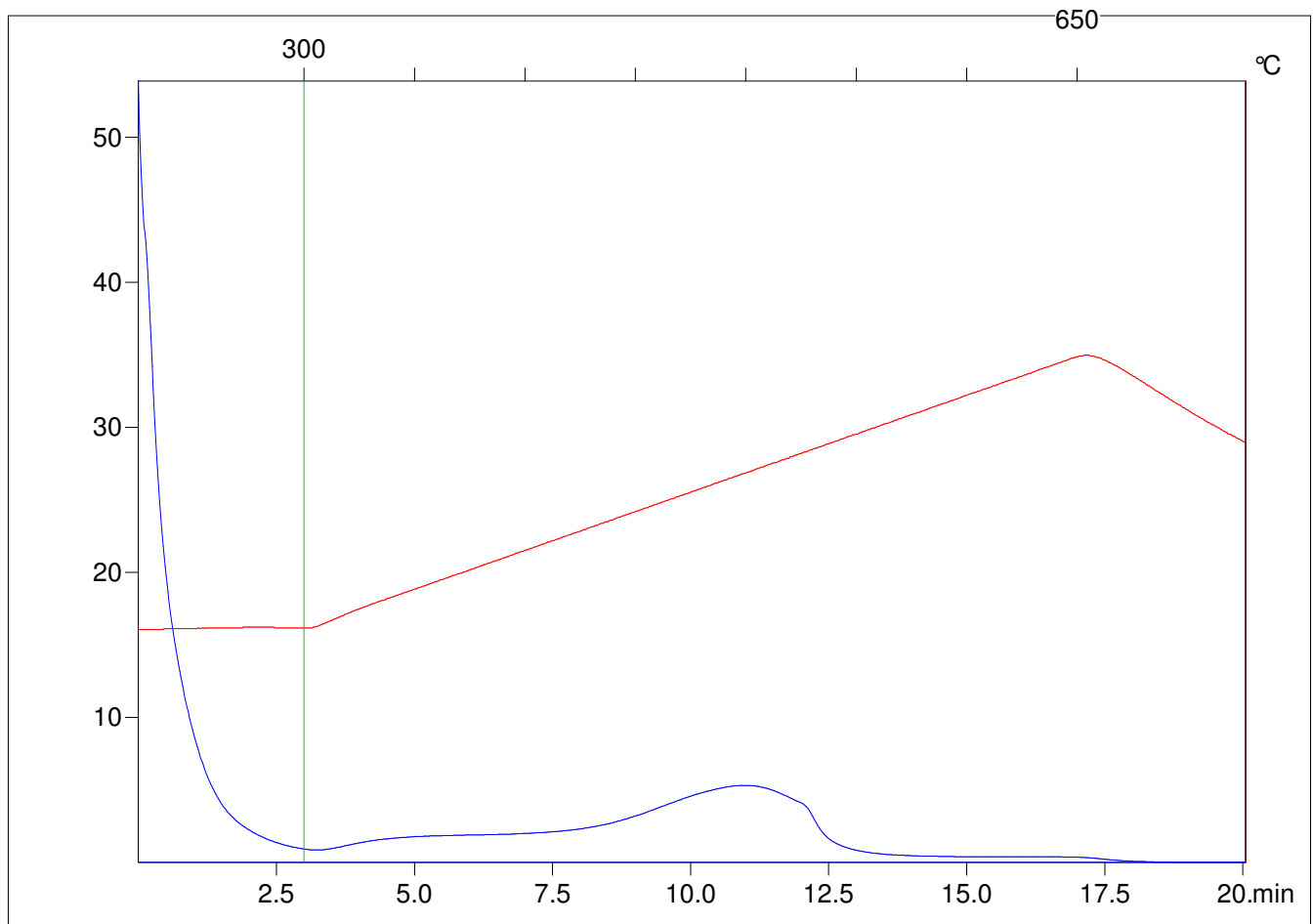
Method =Bulk Rock

Cycle=Basic

KFID(10\*9)=1444

Qty =70.2

TOC=4.37



C:\VINC\PK2\_1792\PK054.R00 : FID pyrolysis graphic

State

Pyro Status

Oxi Status